

6874-BZ-80CR

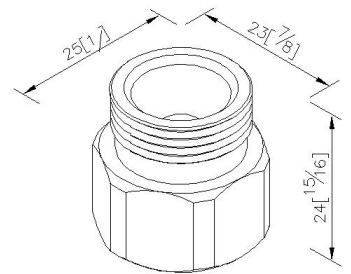
INTRODUCTION:

Connector with filter inside, it could be used to connect between angle stop/water supply and braided hose. The filter could stop the dirt from coming inside and protect the cartridge of faucet, and the filter could be removed easily for cleaning after long term usage.



DESCRIPTION:

- 1.Brass with chrome-plated finish meets the standard of ASTM-SC2.
- 2.Brass material meets JIS 3604 Standard.
- 3.Thread: (M)1/2G*(F)1/2G.
- 4.Protruding filter (60 meshes).
- 5.Washer (L158)/ Dia.12.0xDia.20.0x2.0(NBR).



unit: mm[inch]

Certification:

Fixing Kits:

- 1.

AWARD: