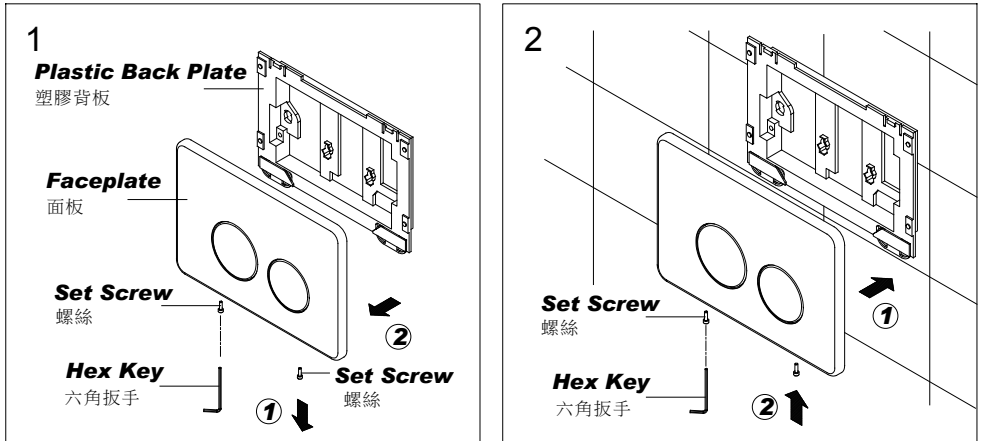


# INSTALLATION INSTRUCTIONS

## KEY PANEL (STAINLESS STEEL) WITH SET SCREW

水箱面板(防竊)安裝說明



1. Disassemble the **Set Screws** from the bottom of **Faceplate**, remove the **Plastic Back Plate**, and then install the **Plastic Back Plate** to concealed cistern as the steps of installation instruction, **PU63-73-STK1**.

**NOTICE:** Please keep the **Faceplate**, 2pcs of **Set Screw**, and **Hex Key** for the further installation.

用六角扳手將面板組底部螺絲x2拆開,再將塑膠背板拆開後,再依說明書編號:**PU63-73-STK1**安裝在水箱上.\*注意螺絲x2支及六角扳手要保存好。

2. After install **Plastic Back Plate**, fix **Faceplate** on it, and then screw 2pcs of **Set Screws** to the bottom of **Faceplate** with **Hex Key**.

塑膠背板安裝好在水箱上後,將面板裝上,用六角扳手將螺絲x2支由面板底部鎖入。

## FIXING CONTENTS

組配件內容

